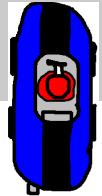
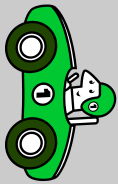
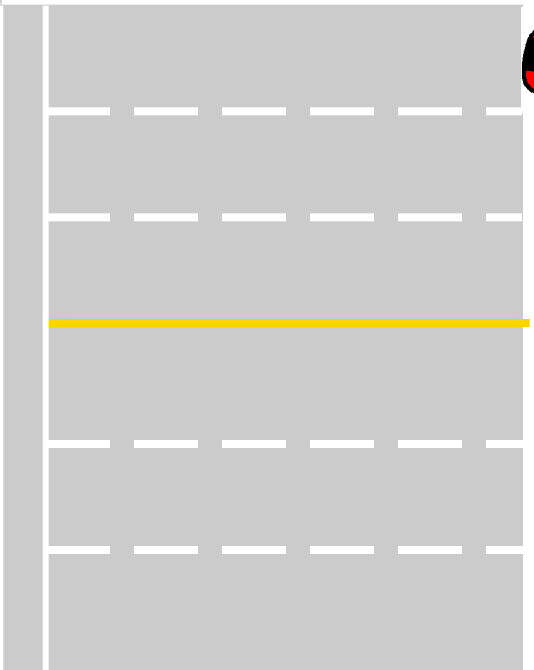
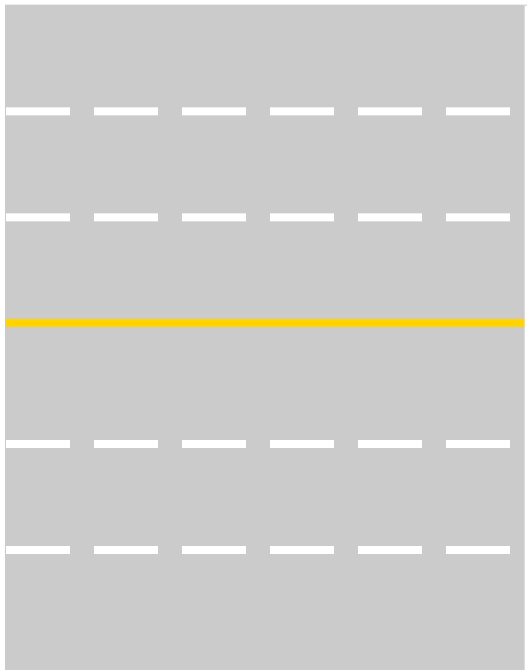
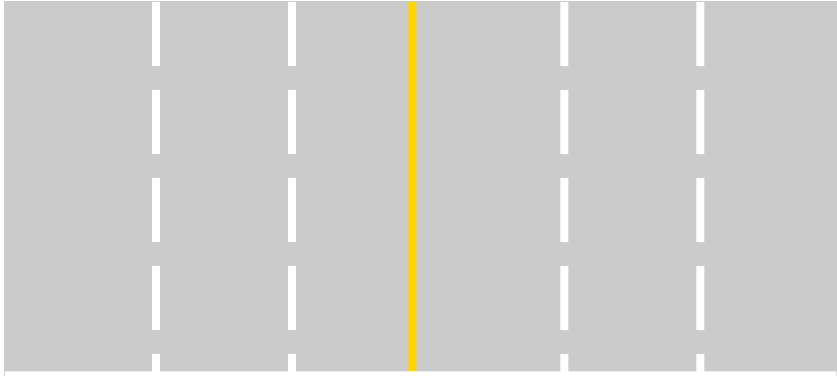
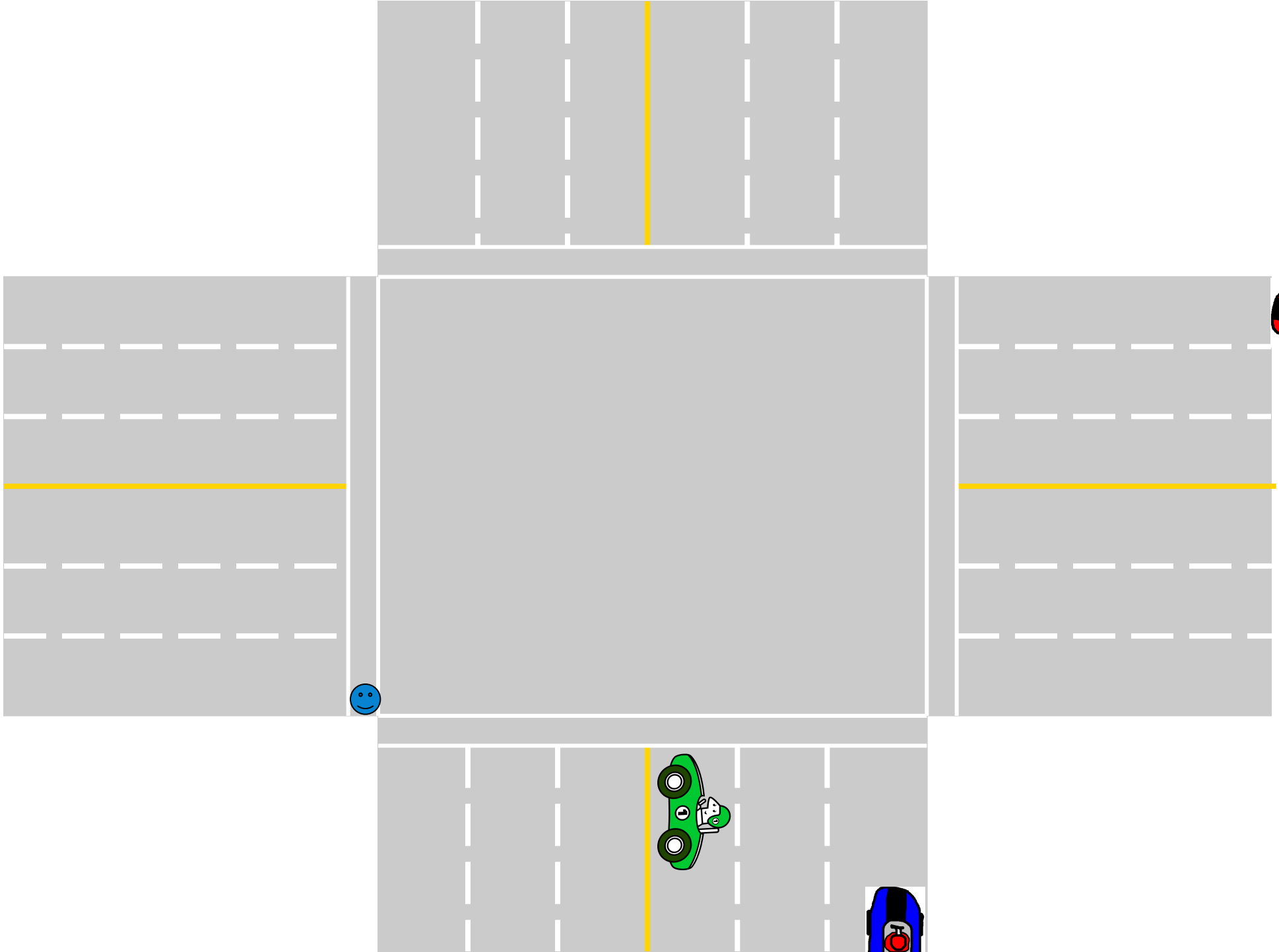
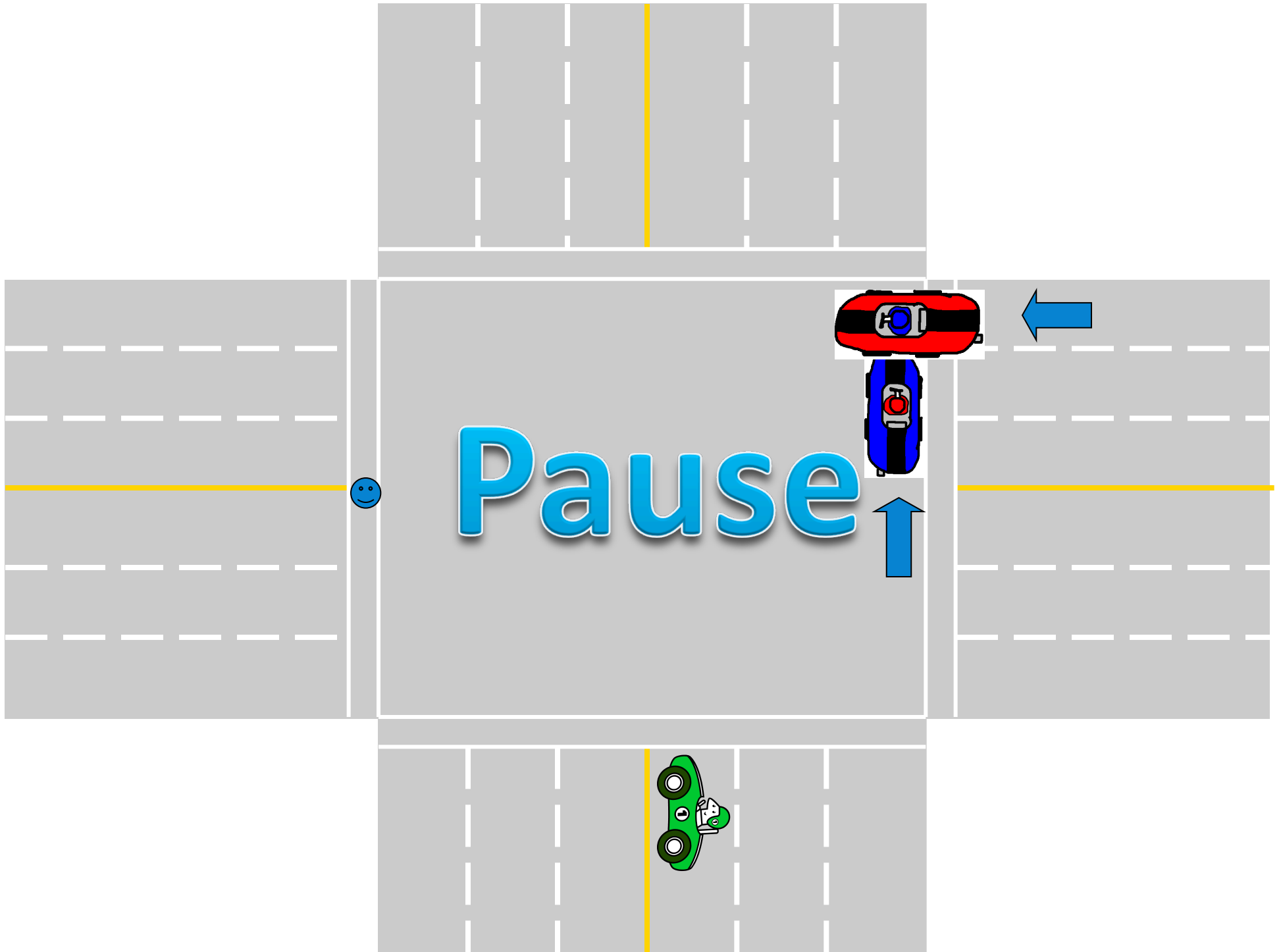


Car Crashes!

Owww I just crashed
because I was speeding





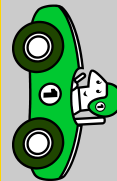


Both Red Car & Blue Car, both a medium mass,
Have Unbalanced Forces,
Because the cars are moving.

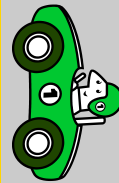
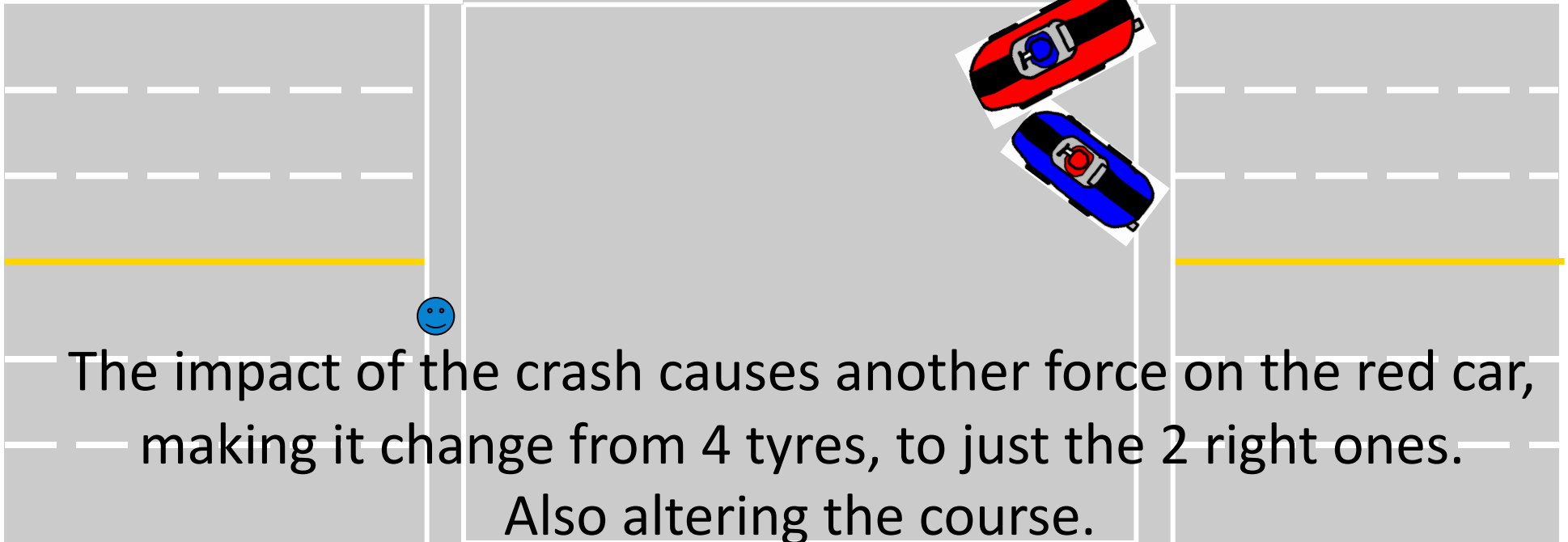
The pedestrian, smaller mass,
has an Unbalanced force as well,
Just not as much speed.

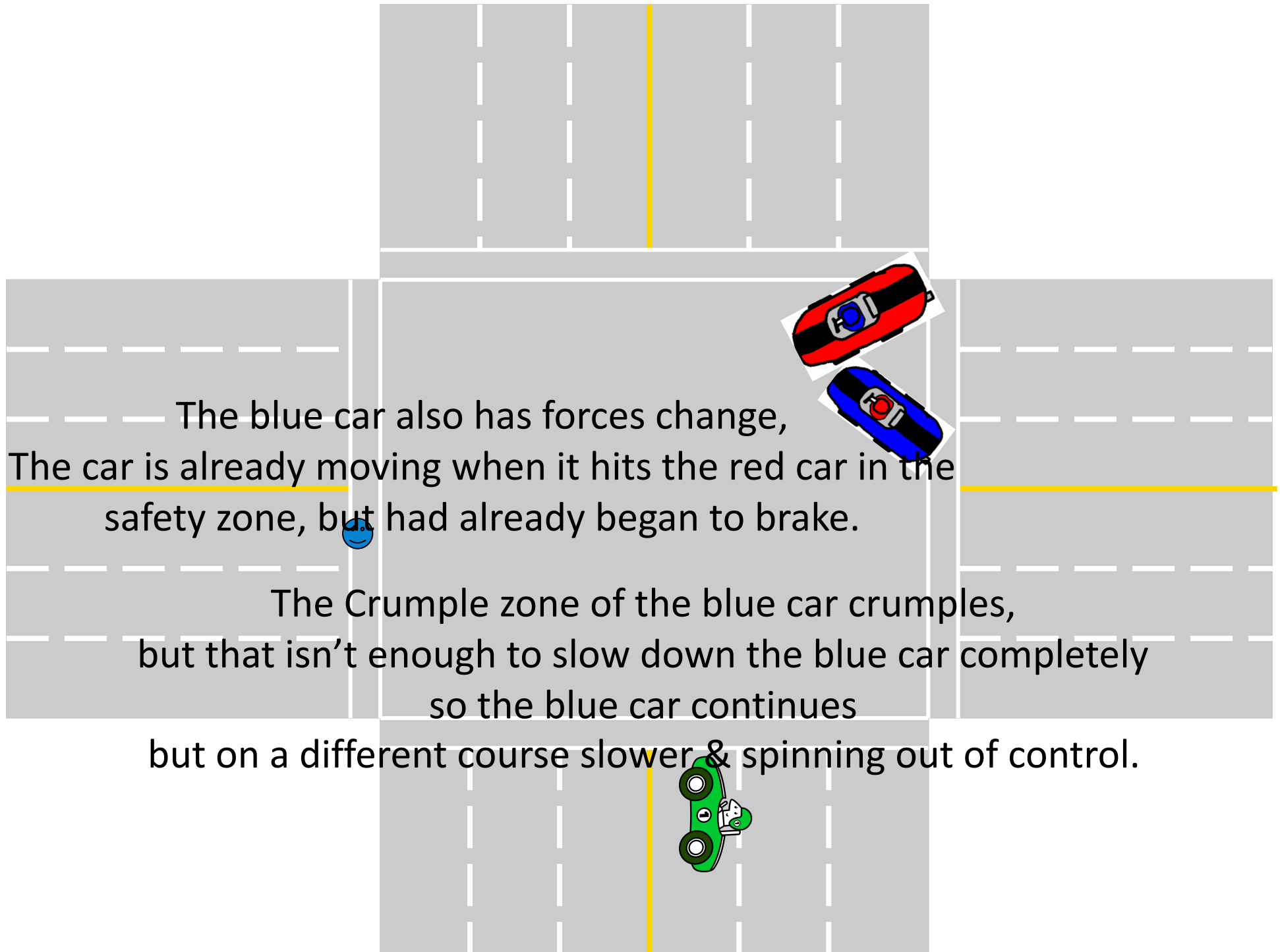


But Green car has Balanced Forces
Because it is not moving.



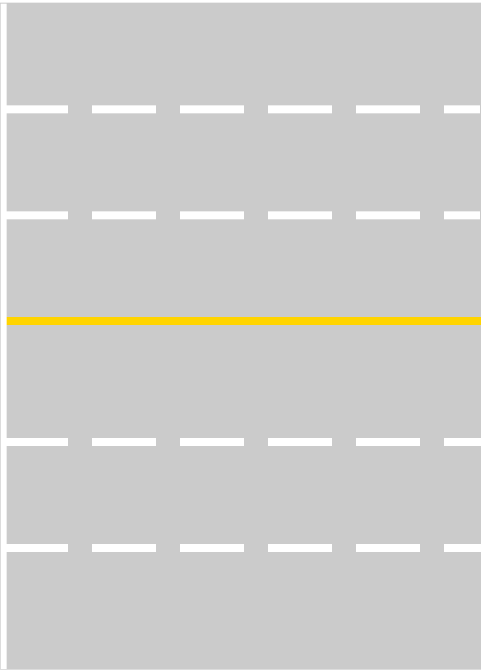
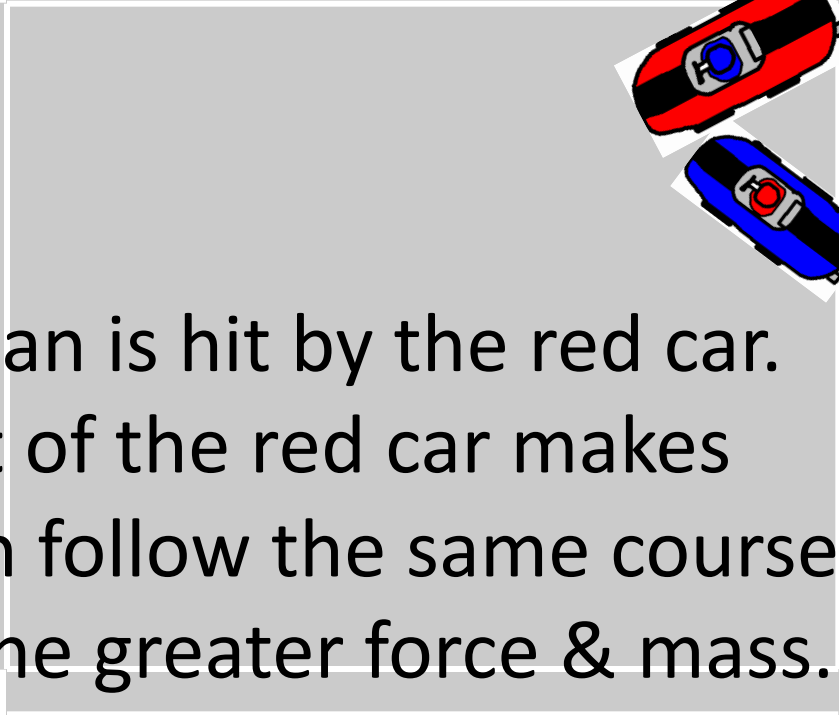
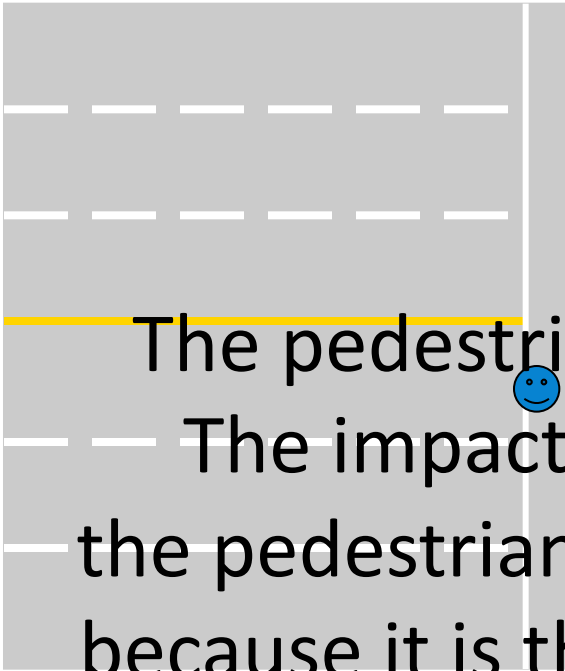
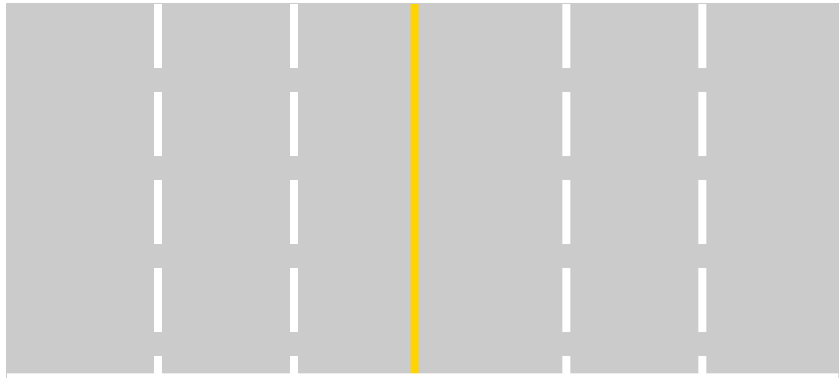
Here The Forces on the Red car,
Blue car & Mr. Pedestrian change





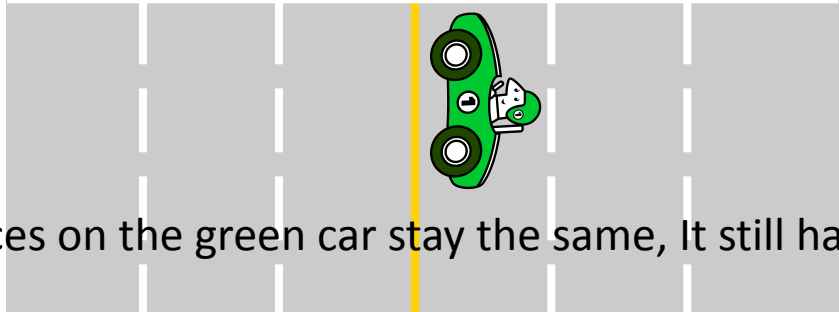
The blue car also has forces change,
The car is already moving when it hits the red car in the
safety zone, but had already began to brake.

The Crumple zone of the blue car crumples,
but that isn't enough to slow down the blue car completely
so the blue car continues
but on a different course slower & spinning out of control.



The pedestrian is hit by the red car.
— The impact of the red car makes the pedestrian follow the same course because it is the greater force & mass.

But the forces on the green car stay the same, It still hasn't moved.



The End

By Schan, Jess &
Mitchell